



Wirless Video Door Phone User's Manual

www.WholesaleGateOpener.com

Contents

Introduction.....	3
Features.....	4
Information of all parts.....	5
Camera.....	5
Monitor.....	6
Display show	8
Operation instructions.....	9
Installation instructions.....	11
Part of power adapter.....	13
Part of the battery.....	13
Specifications and parameters.....	14
Working Environment.....	15
Maintenance of devices.....	15
Matters need to be noticed.....	15
Failure diagnosis.....	16
Accessories.....	17
Technology supporting and service.....	18

□ Remark □ All the pictures and screen display shown in this manual are somewhat different from actual product for advanced version of our product and different production ,as a result , this manual is only for presentating the operation of our product in detail. Please take actual devices as standard product .

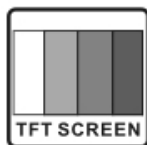
Introduction :

This product adopts the theory of 2.4G digital audio frequency and video wireless transmission ,outdoor surveillance and indoor display , bilateral intercom. The monitor has the remote unlock function and can monitor the outdoor circumstances at any time , the advanced infrared assisting lumination , which make sure being plain view of the visitor at night. With fashionable and fresh appearance , clear viewing, simple installation way , adding one more scientific protection for your family , this is absolutely an ideal security product for modern families.

For better taking advantage of the prior functions please carefully read our instruction for correct installation and operation.

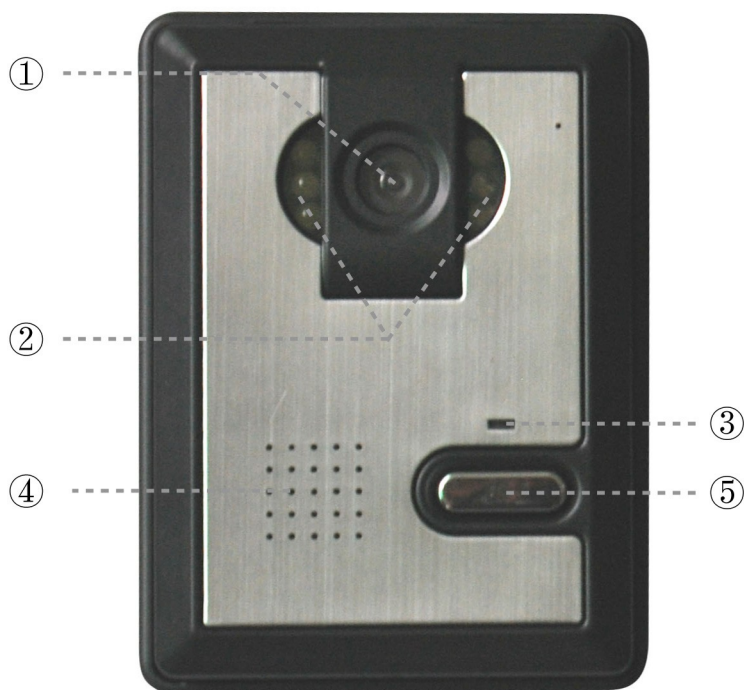
□Remark□:This manual is suit for the kit with one camera matching one monitor instead of one camera matching multiple monitors.

Feature



- ① 2.4GHz launch frequency , no obstacle telecontrol distance is between 150-180m;
- ② With microprocessing technology,auto-remote control , good performance and high reliability;
- ③ The TFT 2.4" digital color LCD for monitor;
- ④ CMOS 300,000 pixel for camera;
- ⑤ Clear night-viewing □ 24 hour monitoring , calling , speaking and unlocking remote controlling etc;
- ⑥ One monitor can support 6 pcs of cameras at most;
- ⑦The mini USB data output for monitor built-in high capacity rechargeable Lithium battery;
- ⑧The monitor can take/save/view more than 200 pcs of photos automatically;

1. Outdoor phone

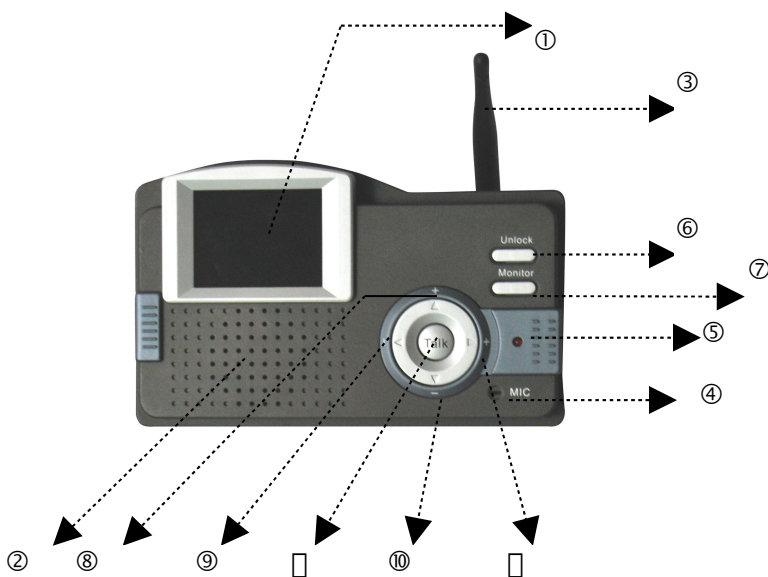


All parts and button instruction

① camera(getting images of visitor and outdoor)

- ② night-viewing light (identify the night-visitor)
- ③ The indicating light(if the light is on ,it stands for charging but on the contrary it indicates charging is over)
- ④ Speaker(to hear the voice of the host indoor)
- ⑤ Call(this button can call the indoor phone and auto start the camera)

2. Indoor video phone



All parts and button instruction:

- ① TFT LCD display (to show the image of visitor)
- ② Speaker (to hear the Dingdong calling and the voice of the visitor)
- ③ Antenne(to transfer the signal of voice , unlock to the camera,at the

same time receive the signal of voice,image and call from the camera)

④ Micro-phone(to convey the visitor's voice to the camera)

⑤ LED: the indicating light(if the light is on ,it stands for charging but on the contrary it indicates charging is over)

⑥ Unlock(to control the camera and open the E-lock)

⑦ Monitor □ Monitoring button / view photos (to monitor the outdoor circumstance / view the photos taken by the camera)

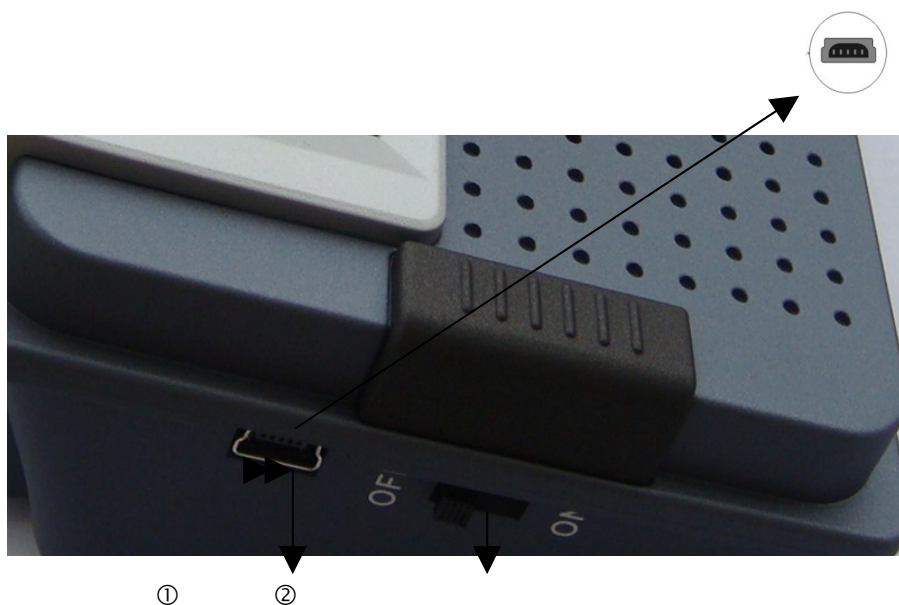
⑧ Brightness+□(to enforce the brightness of images / photo up/ time+)

⑨ Volume-□(turn down the volume/ time-adjusting)

⑩ Brightness-□(turn down the brightness of images/ photo down/ time-)

□ Volume+□(turn on the volume /time-adjusting)

□ Talk□(talk to the outdoor phone)



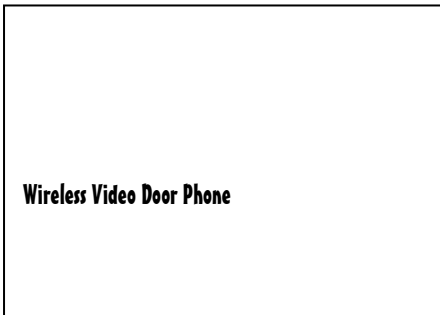
① Mini USB connector for charge;

② power switch

3. Display show

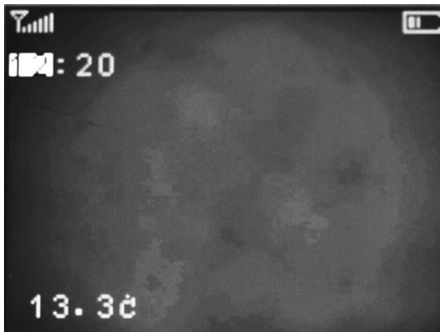
1. Image of starting

Turn the power switch to ON and the screen display this image for 2 seconds and the Dingdong sounds, which shows the devices start normally and go into standby state. When goes into standby state the system automatically shut the image of monitor up



2. The picture of time adjustment

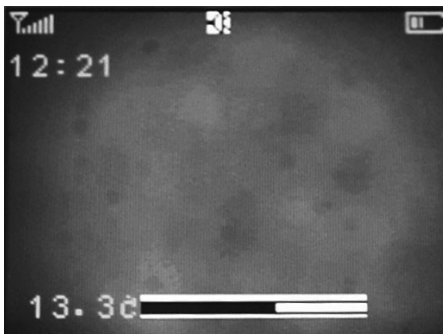
When it's standby, pressing the left/right key to adjust the picture, the up/down key to adjust the time freely, it also shows the temperature outdoor.



3. Image of volume adjustment

To adjust the brightness of image freely by the up/down key on the menu while it's working!

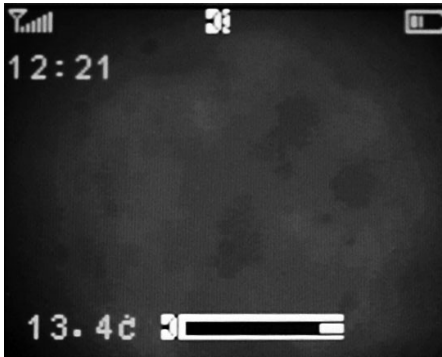
adjusting range: 0-9



4. Image of volume adjusting

To adjust the volume by the left/right key on the menu while it's working.

adjusting range: 0-9



5. Image of talking

After the call from outdoor speaker press Talk and talk to the outdoor speaker , re-press the button , the monitor image shuts off . If there is call from outdoor speaker , the host only can hear the voice of outdoor speaker without pressing the Talk , but the outdoor visitor cannot be conscious of the inside circumstances

6. Image of unlocking

- ①When outdoor speaker calls , to press Unlock and can do the operation of opening the lock .
- ②If there is no calling from outdoor speaker or it is monitoring , it's useless to press the unlock.
- ③If there is calling when it is monitoring,press the Unlock to open the E-lock while it's working.
- ④ Specification: Voltage:12V Current: less than 1A Unlock Mode: plug-in unlock.

4.Operation instructions

First you need to check the correct code with the power on , pressing the Talk and the Call button to check the code. Please connect the E-lock with power as the manual instructed ,connect the power of the camera and turn on the monitor. Then press the Monitor for 1 second to turn on the outdoor monitoring image, adjust it to be the best picture quality by adjusting the brightness, the correct operation as follow:

1) Operation of the doorphone

The visitor presses the call button of the camera ,the monitor will sounds and show the image of visitor .If the host answers , press the Talk to speak to visitor, press the Unlock to open the E-Lock in talking model, if the host doesn't press Talk ,he can hear the voice of visitor ,however,the visitor cannot be conscious of the inside circumstances.Press the unlock key to open the E-lock ;if the host isn't in or doesn't go on with more operation after 30 seconds the monitor will shut off and save the image of outdoor automatically.

2) The operation of the monitor

If there is no calling from the camera, the user has to monitor the outdoor circumstance by indoor video phone, pressing the Monitor button for one second going to the image of outdoor monitoring for 24H monitoring .Press Talk to speak , press Unlock to open the E-lock and press Monitor to close the image .

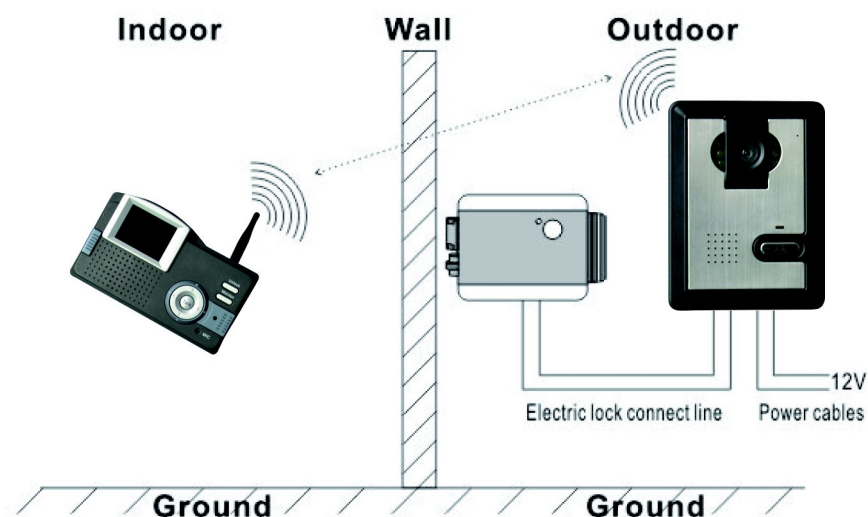
3) Instruction for taking photos :

When it's standby, pressing Monitor for 3 seconds to turn up the photo

model ; pressing Talk to take photos of outdoor , one press for one photo, to look through the photos kept by up,down,left and right buttons. Press the monitor again to cancel all of the photos and there can keep 200 pcs photos at most. One more press on Talk to quit the through-looking model and going into active image model ,then press the Monitor for 3 seconds can quit the photo model .

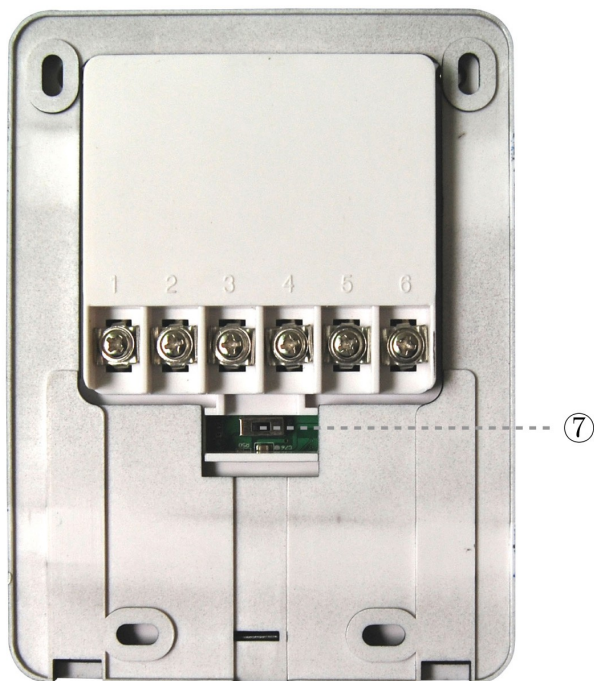
5. Installation instructions

The monitor control the camera to unlock as follow:



After pressing the Unlock key of the monitor, it transfers the signal of unlock to the camera in the way of wireless, and the E-lock will be opened (electronic lock connected with the camera by electronic cable)

The back of outdoor phone



Among them:

- (1) the positive for power cables
- (2) the anode wiring for power
- (5) for motor lock is the connection level
- (6) for electrical wiring end lock negative
- (7) The power switch of outdoor device

6. Part of power adapter

- ①The power of the outside device: 12V/1A(DC transformer)
- ②The power of the inside device:5V/1A(DC transformer)
- ③Pls use the appointed power adaptor or same style(same voltage and electricity) power adaptor ,the unspecified power adaptor may damage the electronical devices and chips inside;

7. Part of the battery

- ①The monitor built-in high capacity rechargeable Lithium battery, the monitor should be put at the windy , shadowed and non-sunshine place;
- ②The battery is easily-consumed product with limited life , if repeatedly charging or releasing in using state will shorten its life;
- ③New product must be charged more than 5 hours for the first two times to en-active the Li-ion batteries, after that charging for 2-3 hours every time.

8. Specifications and parameters

Outdoor extension		Indoor extension	
Power Supply	Input:AC 100-240V 50/60Hz Output: DC 12V 1A	Power Supply	Input:AC 100-240V 50/60Hz Output: DC 5V 1A
Camera	CMOS 300,000 pixels	Screen specifications	2.4" TFT 320×240
Light Source	6 LED lights	Battery	3.7V 1200mAh Li-Ion Battery
Power consumption	Standby:0.2W Unlock:12W	Power consumption	Standby:0.1W Work:2W
Modulation	GFSK	Modulation	GFSK
Frequency	2.4GHz	Frequency	2.4GHz
Transmitting power	17dBm	Transmitting power	17dBm
Channel number	18	Channel number	18
Size	125×94×25	Size	162×100×50
		Charging time	3 hours
		Standby time	6 days

9. working surrounding

- ①Working temperature -25°C—+50°C
- ②The range of working humidity cannot be more than 85%

10. Maintenance of devices

- ①Keep the clearance of the surface and use the soft dry cloth to clean the dust of the product□
- ②Please turn off the power of indoor device when clean the indoor device□
- ③If there is the hard dirty ,which cannot be cleaned with dry cloth, please use the soft towel dipped in the neutral diluted detergent to clean the product and then clean it with dried cloth□
- ④Don't clean the product with benzene , diluted liquid or petrol etc organic liquid for these will damage the outside part or vary the outside color of the product.

11. Matters need to be noticed

- ①The product should be placed where is stable , windy , air-dry, non-sunshine ,non strong magnetic and non-dusty□
- ②Don't clean the surface with chemicals but with soft and clean dried cloth□
- ③Don't press several buttons at the same time□
- ④The outdoor and indoor devices must be matched with appointed styles and cannot match with other styles ,which are not our products.

⑤Don't privately uncover the devices , please contact with the dealer or our technology department if there is any problem.

12. Failure diagnosis

Defec	Judgement	Operation
Unable to start the product	If turn the switch to the "ON"?	Turn the switch to the ON
	If the power of Li-ion batteries is not enough?	To charge the li-ion batteries
	If connect the power adaptor?	To connect the power adaptor
Unable to charge	If the plug of power adaptor correctly plug into the charging slot?	Re-connect the devices and power adaptor
	If the power adaptor correctly get through the 100-240V DC electricity?	Re-insert the plug to make power Adaptor get DC electricit
Speaking state no voice	If the volume is adjusted to be the least?	To adjust the volume to be suitable
The image is flashing or noise	If the indoor device is close to TV set , fluorescent lamps , mobile phone , which has electronical and magnetic wave?	Keep the devices off these things which has electronical and magnetic wave
The indoor video phone shows no signal image	If the outdoor phone doesn't connect the power?	To connect the outdoor device power
	If the outdoor phone is far away from the indoor phone?	Keep the distance in 60 meters within (stopped by multi-wall)
	If there is other strong magnetic space bother?	Put the indoor device out of the strong magnetic space
	If there is unrecognized code for the time display?	Press the Unlock key for 5 seconds

13. Accessories

□Monitor	1PCS	□Camera	1PCS
□12V/1A Power	1PCS	□5V/1A Power	1PCS
□Screw	4PCS	□Line for E-lock	1PCS
□Remark□The E-lock isn't the accessory			

Technology supporting and service

①We insist tracking service through foresale ,sale and postsale , please carefully read our instruction book before installation□

②Please follow the instruction book before installation and testing, if there is any doubt please call our tech-supporting and customer service center.

□ Remark □ (1)Our company applies ourselves to reformation and

innovation of our products . No extra informing if there is any change. The illustration shown here only used for reference , if there is any difference please take the actual product as standard product.

(2) Our company reserves the final right of interpretation of the production ,any problem of the quality ,please feel free to return it to us ! No company and individual has the right to tear up the label of this product without permission. Or you should be responsible for your action.



LockMasterTM
16915 SE 272nd Street, Suite 100-105
Covington WA 98042 USA
sales@WholesaleGateOpener.com
www.WholesaleGateOpener.com
©2005-2009 LockMaster All Rights Reserved